

Humphrey® Field Analyzer II - *i* series



Threshold Visual Fields in as Little as 2 Minutes

SITA™ sensitivity, reproducibility & accuracy has been shown in clinical testing

Diagnostic Precision

STATPAC™, the language of perimetry, compares results to proprietary age-normative and glaucoma databases

Early Glaucoma Detection

Blue-Yellow perimetry has been shown to provide earlier detection of glaucomatous visual field loss

Improved Reliability

Patented fixation monitoring features automatically track and align patient head and eye position, alerting operator to patient movement away from the trial lens

Gold Standard

Over 35,000 Humphrey perimeters worldwide

Practice Friendly

4 Models to choose from to meet practice needs. Kinetic, Custom and Esterman disability testing allow the widest range of testing protocols on any perimeter

Operator Friendly

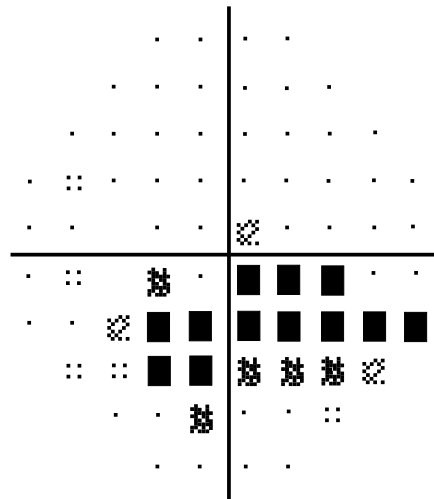
Touch screen with on-screen menus simplify and expedite instrument operations

Patient Friendly

Wheelchair accessible and award winning ergonomic design allow maximum comfort for all patient body types

Complete Archiving System

The HFA II - *i* series contains a hard drive and Magneto-optical drive



Humphrey® Field Analyzer II - *i* series Technical Specifications

Specifications: Models 720*i*, 740*i*, 745*i*, 750*i*

Maximum Intensity	10,000 ASB	Max. Temporal Range	90 degrees
Stimulus Duration	200 msec	Electrical Requirements	100-120V/230V~±10%, 50-60 Hz, 4A/1.8A
Stimulus Wavelength	Broadband visible light	Safety Approvals	UL 2601-1, CSA 22.2 No. 601.1, EN 60601-1, EN 60601-1-2
Bowl Testing Distance	30 cm	Dimensions	Height 23 5/8", Width 22 3/4" Depth 20.4", Weight 87.8 lbs
Bowl Illumination	31.5 ASB		Height 575mm, Width 580mm, Depth 518mm, Weight 39.9kg

Testing Features		Model 720<i>i</i>	Model 740<i>i</i>	Model 745<i>i</i>	Model 750<i>i</i>
Threshold Test Library					
Central Field Test Patterns	10-2, 24-2, 30-2, Macula	X	X	X	X
Peripheral Field Test Patterns	60-4, Nasal Step	X*	X	X	X
Threshold Test Strategies	SITA Standard	X	X	X	X
	SITA Fast	X	X	X	X
	Full Threshold	X	X	X	X
	FastPac™	X	X	X	X
Screening Test Library					
Central Field Test Patterns	C-40, C-64, C-76, C-80, C-Armaly	X*	X	X	X
Peripheral Field Test Patterns	P-60, FF-81, FF-120, FF-135, FF-246, FF-Armaly, Nasal Step	X*	X	X	X
Screening Test Strategies	Two Zone	X	X	X	X
	Three Zone	X	X	X	X
	Quantify Defects	X	X	X	X
Screening Test Modes	Age Corrected, Threshold Related, Single Intensity	X	X	X	X
Specialty Test Library					
Esterman Monocular		X	X	X	X
Esterman Binocular		X	X	X	X
Superior 36		X	X	X	X
Superior 64		X	X	X	X
Kinetic Testing			Opt.	Opt.	X
Custom Testing			X	X	X
Stimulus/Background Color	White on White	X	X	X	X
	Red or Blue on White		X	X	X
	Blue on Yellow (Short Wavelength Automated Perimetry)		Opt.*	X	X
General Testing Features	Goldmann Stimulus Sizes	III	I-V	I-V	I-V
	Foval Threshold Testing		X	X	X
	Automatic Pupil Measurement				X
User Defined Test Storage		X	X	X	X
User Features					
Fixation Monitoring	Heijl / Krakau Blind Spot Monitor	X	X	X	X
	Video Eye Monitor	X	X	X	X
	Gaze Tracking		X	X	X
	Head Tracking				X
	Lens Tracking (Vertex Monitor)				X
	Remote Video Eye Monitor Capability	X	X	X	X
Operator Interface	Touch-screen on CRT	X	X	X	X
	Keyboard	Opt.	Opt.	Opt.	X
	Motorized Chinrest	X	X	X	X
	Help Menus	X	X	X	X
Printer	Printrex thermal printer, table mounted	X	X	X	X
Patient Data Input	Name, DOB, I.D., Trial Lens Rx, Visual Acuity, Pupil Size	X	X	X	X
	IOP, C/D, ICD-9 Codes, CPT Codes, Comments		X	X	X
Analysis Software	STATPAC 2™ — Single Field Analysis	X	X	X	X
	STATPAC 2 — Single and Multiple Field Analysis		X	X	X
	STATPAC for Blue on Yellow			X	X
	STATPAC for SITA	X	X	X	X
Data Storage	Single 3.5" Floppy Drive	X	X	X	X
	Magneto-optical Disk Drive	Opt.*	Opt.*	Opt.*	X
	2.2 GB Hard Disk	X	X	X	X
	2.2 GB Hard Disk with Magneto-optical Drive (subject to change)				X

* Model 720*i* does not include Nasal Step, C-64, FF246 or Armaly test patterns.

* Available as a field upgrade only; can not be factory ordered.

Customer supplied peripheral options:

- Compatible with some LaserJet printers.
- Compatible with some IBM-compatible serial mouse and/or trackball. External input devices require a PS/2 style plug.

All specifications subject to change without notice.

Carl Zeiss Ophthalmic Systems, Inc.

Humphrey Division

5160 Hacienda Drive

Dublin, CA 94568 U.S.A.

Email: info@humphrey.com

Toll-Free: 1-877-486-7473

Phone: 925-557-4651

Fax: 925-557-4217

Web: www.humphrey.com